



TO: Board of Directors

FROM: Jim Derwinski, CEO/Executive Director

SUBJECT: February 2023 Ridership Trends

DATE: March 15, 2023

This memo describes ridership patterns in 2023, including ridership and service recovery by line and service period. Data in this report is preliminary and will be finalized at the end of the year.

In February 2023, Metra provided 2.1 million passenger trips, down from 2.2 million trips in January. Lower ridership in February compared to January fits with trends seen in prior years, largely attributed to February having one less weekday, the same number of Saturdays, and two less Sunday/Holidays than January.

Estimated Passenger Trips by Month

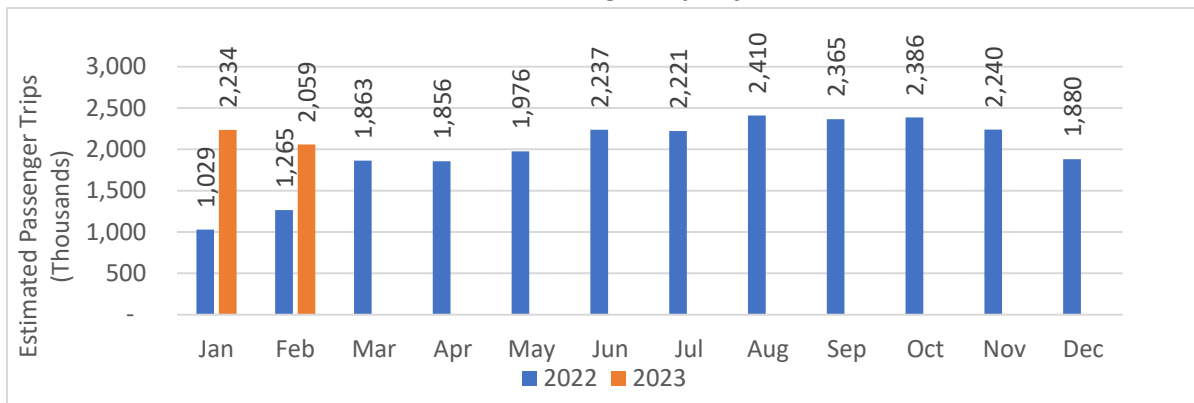


Exhibit 1

Estimated Passenger Trips by Line (February 2022 vs. February 2023)

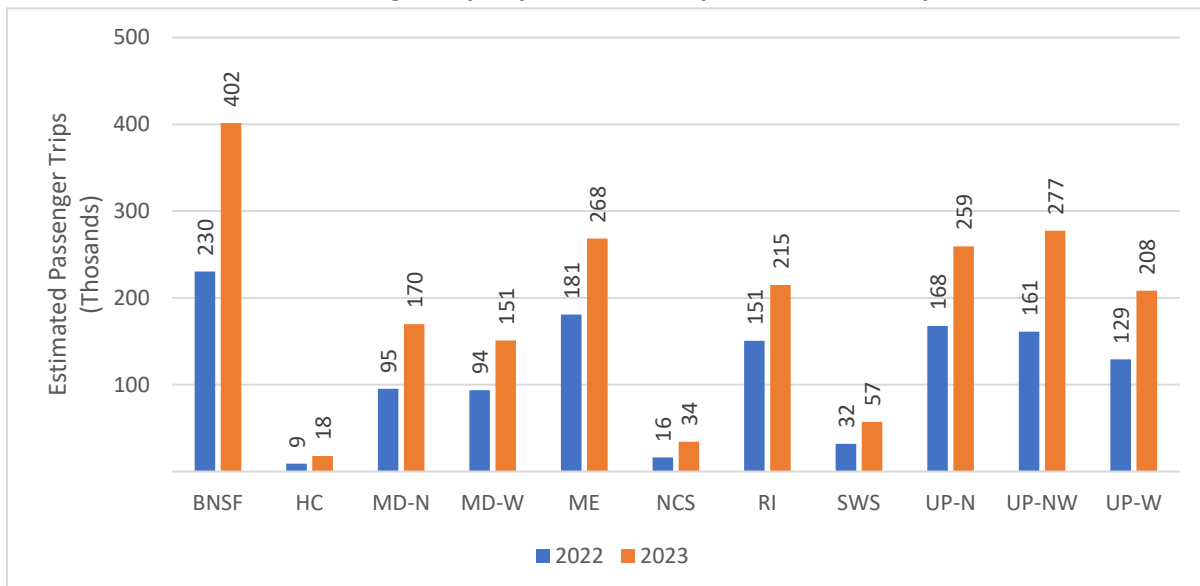
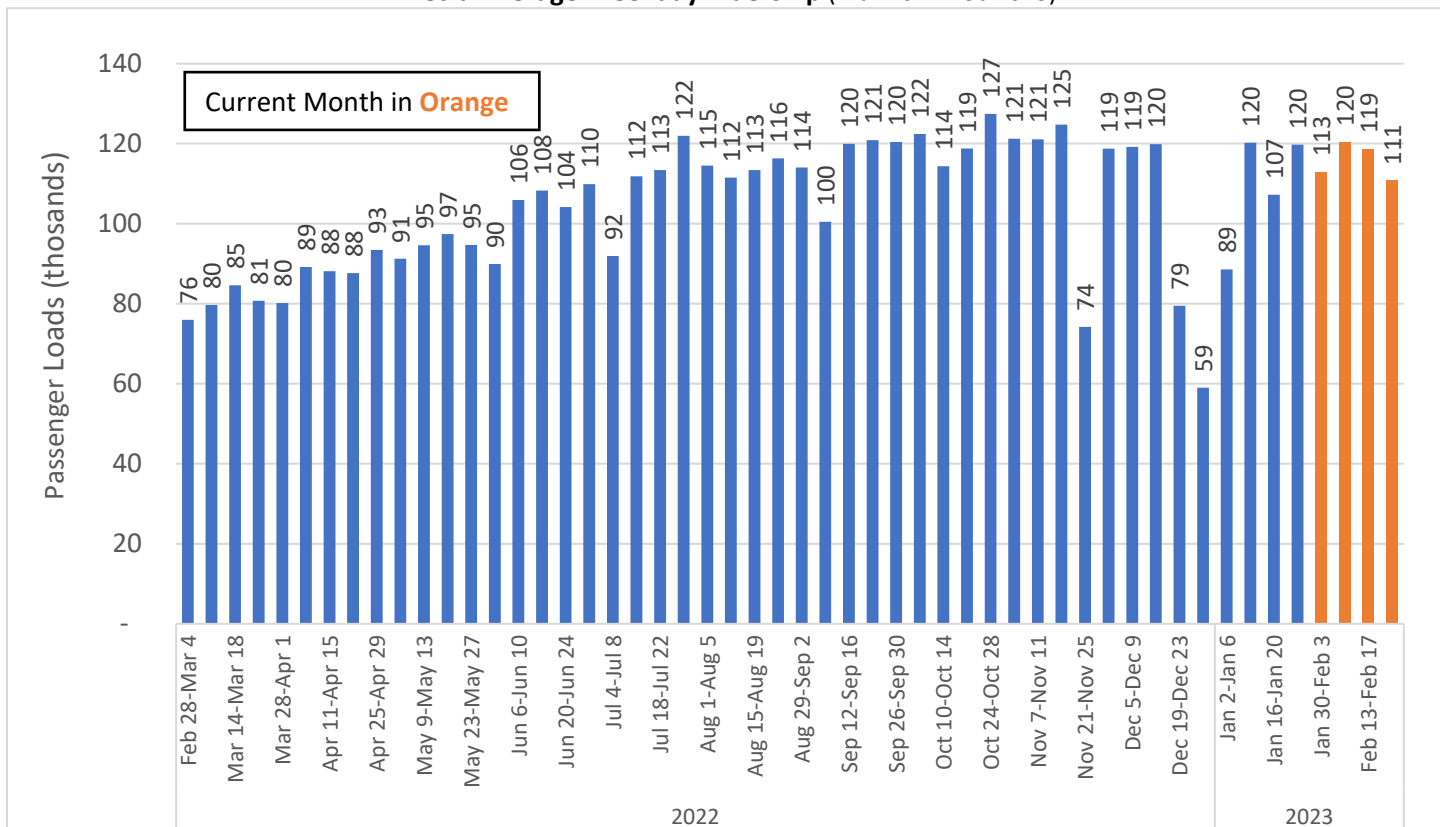


Exhibit 2

Weekday Ridership

Average weekday ridership in February was 116,600, which was 3% higher than January. February's average weekday ridership was 43% of 2019 levels. Three out of four weekdays in February had over 100,000 rides per day.

Metra Average Weekday Ridership (Mar 2022-Feb 2023)



Metra Average Weekday Ridership

	2022										2023	
	Mar	Apr	May	Jun	Jul	Aug	Sep	Oct	Nov	Dec	Jan	Feb
Weekday Avg Chg. from Prior Month	30%	9%	10%	11%	4%	1%	3%	1%	-2%	-12%	10%	3%

Exhibit 3

Weekday Passenger Loads for Month (Fridays shown with grey bars)

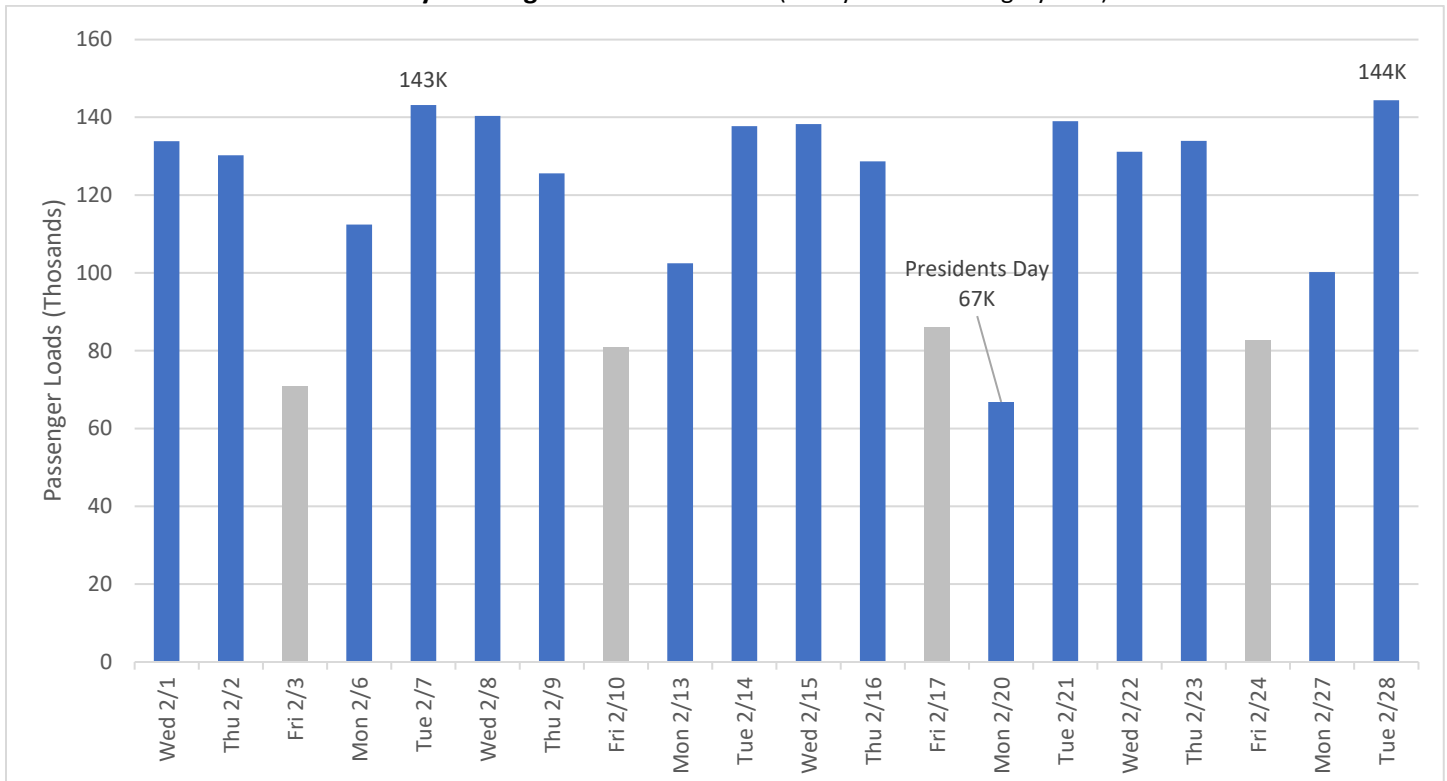


Exhibit 4

February Ridership Highlights

- In February, Metra sold its highest number of Monthly Passes (31,357) since the COVID-19 pandemic began.
- Metra’s highest ridership day of the month was Feb 28, with 144,400 daily riders, which was the third highest ridership day since the COVID-19 pandemic began.
- Metra Electric trains made extra stops for the 2023 Chicago Auto Show at McCormick Place. The show ran from Saturday, Feb. 11 through Monday, Feb. 20, 2023.

Service Status

Metra continues to restore service in different capacities on its lines, as ridership recovers from the COVID-19 pandemic. Schedules for four lines (BNSF, Metra Electric, Rock Island, and Union Pacific North) were redesigned to standardize stopping patterns and to increase midday service as part of a pilot schedule initiative. These lines demonstrate a stronger midday recovery compared to the overall recovery of those lines and compared to the system’s midday as a whole. For example, the Union Pacific North and Metra Electric has a recovery of 68% and 95%, respectively, during the midday compared to the system’s recovery of 61%.

In January 2023, Metra increased the number of weekday trains on the SouthWest service from 12 to 30, restoring the line to its weekday pre-COVID total. The schedule has evening service, more consistent headways, and allows for easier transfer between other lines at Union Station. The SouthWest service does not operate on Saturdays. This follows the December addition of service to the Milwaukee District North, Milwaukee District West, North Central Service and Union Pacific West lines. Metra staff monitors ridership and operations on these schedule enhancements to determine if future adjustments are necessary.

Ridership Recovery by Line & Service Period (Feb 2023 as a percentage of Feb 2019)

Line	Peak	Rev Peak	Midday	Evening	Weekday	Saturday	Sunday
BNSF	40%	43%	54%	36%	42%	62%	77%
HC	37%	-	-	-	36%	-	-
MD-N	41%	30%	52%	28%	40%	59%	64%
MD-W	33%	40%	54%	43%	35%	48%	59%
ME	40%	134%	95%	83%	53%	107%	110%
NCS	32%	19%	57%	-	32%	-	-
RI	37%	78%	73%	47%	41%	57%	66%
SWS	35%	26%	31%	11%	33%	-	-
UP-N	48%	52%	68%	54%	51%	85%	84%
UP-NW	40%	51%	49%	39%	41%	88%	79%
UP-W	48%	51%	54%	41%	48%	57%	55%
Total	41%	51%	61%	42%	43%	73%	75%

Exhibit 5

Monthly Pass Sales

Metra continues to offer its Monthly Pass at a flat-rate of \$100, which began in July 2022. Despite the shorter month, total monthly pass sales increased by 5%, with nearly 1,400 additional tickets sold.

Monthly Pass Sales

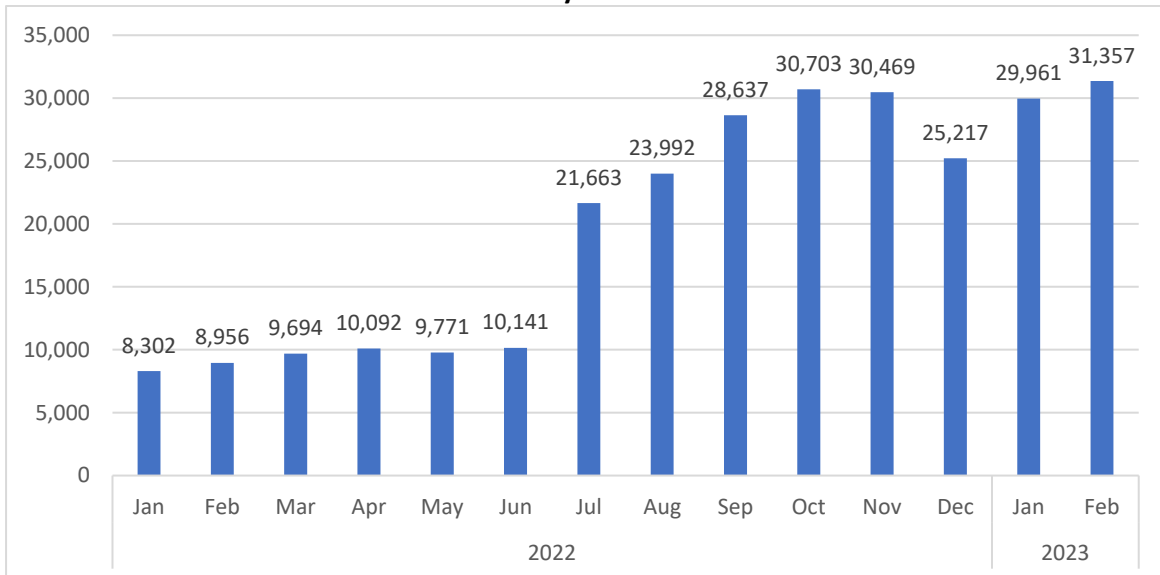


Exhibit 6

Ridership by Ticket Type

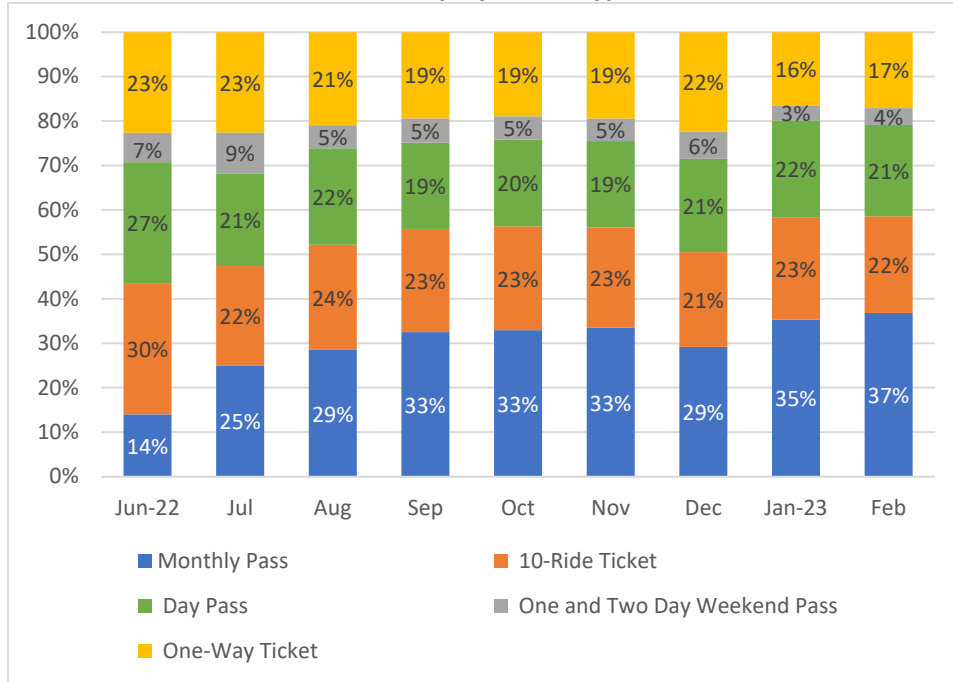


Exhibit 7

Ticket Sales

Metra sold over 31,000 Monthly Passes in February, accounting for nearly 36% of total ridership (including free trips). 62% of Metra riders used a pass product in February.

Ticket Sales and Ridership by Ticket Type (thousands)

Ticket Type	Ticket Sales					Ridership					
	Feb 2019	Jun 2022	Feb 2023	Feb 2019 Share	Feb 2023 Share	Feb 2019	Jun 2022	Feb 2023	Feb 2019 Share	Jun 2022 Share	Feb 2023 Share
Monthly Pass	84	10	31	10%	5%	3,617	308	748	63%	14%	36%
10-Ride Ticket	140	65	44	17%	6%	1,399	649	442	25%	29%	21%
One-Way Ticket	547	498	347	68%	51%	547	498	347	10%	22%	17%
Weekend Pass	35	-	-	4%	0%	87	-	-	2%	0%	0%
One Day Weekend Pass	-	67	36	0%	5%	-	113	60	0%	5%	3%
Two Day Weekend Pass	-	15	9	0%	1%	-	32	17	0%	1%	1%
Day Pass	-	312	220	0%	32%	-	599	417	0%	27%	20%
\$6 Day Pass	-	55	70	0%	10%	-	134	146	0%	6%	7%
\$10 Day Pass	-	257	131	0%	19%	-	465	271	0%	21%	13%
RTA Ride Free Permit	-	-	-	0%	0%	59	37	29	1%	2%	1%
Total	805	967	687	100%	100%	5,708	2,237	2,059	100%	100%	100%

Exhibit 8

Ridership by Sales Channel (thousands)

Sales Channel	Ticket Sales				Ridership			
	Feb 2019	Feb 2023	Feb 2019 Share	Feb 2023 Share	Feb 2019	Feb 2023	Feb 2019 Share	Feb 2023 Share
Conductor	115	62	14%	9%	203	69	3%	3%
Commuter Benefit	36	5	4%	1%	1,217	89	21%	4%
Ventra App	426	541	53%	79%	2,461	1,558	42%	76%
Ticket Agent	203	68	25%	10%	1,687	293	29%	14%
Ticket Vending Machine	25	11	3%	2%	195	21	3%	1%
RTA Ride Free Permit	-	-	0%	0%	59	29	1%	1%
Total	805	687	100%	100%	5,822	2,059	100%	100%

Exhibit 9

Note: Values in Exhibits 8 and 9 do not add to total ridership due to Group Sales, Marketing Sales, and Refund Adjustments; 2019 data may not match previously reported totals due to late-reporting sales and refunds; 2023 data are preliminary and subject to revision as data is continuously reviewed throughout the year. Sales of incremental tickets are not included.

Prepared by: Daniel Miodonski, Senior Manager, Operations Planning & Analysis
 Steven Mannella, Manager, Transportation Planning, Operations Planning & Analysis
 Cody Wolcott, Principal Transportation Planner, Operations Planning & Analysis